

<b>System</b> <ul style="list-style-type: none"> <li>CPU: Mozart 120 SoC</li> <li>Flash: 16MB</li> <li>RAM: 128MB + 128MB</li> <li>Embedded OS: Linux 2.6</li> </ul>	<b>Alarm and Event Management</b> <ul style="list-style-type: none"> <li>Triple-window video motion detection</li> <li>Tamper detection</li> <li>One D/I and one D/O for external sensor and alarm</li> <li>Event notification using HTTP, SMTP or FTP</li> <li>Local recording of MP4 file</li> </ul>
<b>Lens</b> <ul style="list-style-type: none"> <li>Board lens, vari-focal, f = 3 ~ 9 mm, F1.2 (wide), F2.1 (tele), auto-iris</li> <li>Removable IR-cut filter for day &amp; night function</li> </ul>	<b>On-board Storage</b> <ul style="list-style-type: none"> <li>SD/SDHC card slot</li> <li>Stores snapshots and video clips</li> </ul>
<b>Angle of View</b> <ul style="list-style-type: none"> <li>31.7° ~ 93.0° (horizontal)</li> <li>23.8° ~ 68.4° (vertical)</li> </ul>	<b>Security</b> <ul style="list-style-type: none"> <li>Multi-level user access with password protection</li> <li>IP address filtering</li> <li>HTTPS encrypted data transmission</li> <li>802.1X port-based authentication for network protection</li> </ul>
<b>Shutter Time</b> <ul style="list-style-type: none"> <li>1/5 sec. to 1/40,000 sec.</li> </ul>	<b>Users</b> <ul style="list-style-type: none"> <li>Live viewing for up to 10 clients</li> </ul>
<b>Image Sensor</b> <ul style="list-style-type: none"> <li>1/3.2" CMOS sensor in 1600x1200 resolution</li> </ul>	<b>Dimension</b> <ul style="list-style-type: none"> <li>Φ 83 x 210 mm</li> </ul>
<b>Minimum Illumination</b> <ul style="list-style-type: none"> <li>0.1 Lux / F1.2</li> <li>0 Lux / F1.2 (IR LED on)</li> </ul>	<b>Weight</b> <ul style="list-style-type: none"> <li>Net: 1600g (Including bracket)</li> </ul>
<b>IR Illuminators</b> <ul style="list-style-type: none"> <li>Built-in IR illuminators, effective up to 25 meters</li> </ul>	<b>LED Indicator</b> <ul style="list-style-type: none"> <li>System restore status indicator</li> </ul>
<b>Video</b> <ul style="list-style-type: none"> <li>Compression: MJPEG &amp; MPEG-4</li> <li>Streaming:                             <ul style="list-style-type: none"> <li>Simultaneous multiple streams</li> <li>MPEG-4 streaming over UDP, TCP, HTTP or HTTPS</li> <li>MPEG-4 multicast streaming</li> <li>MJPEG streaming over HTTP or HTTPS</li> </ul> </li> <li>Supports activity adaptive streaming for dynamic frame rate control</li> <li>Supports video cropping for bandwidth saving</li> <li>Supports ePTZ for data efficiency</li> <li>Supports 3GPP mobile surveillance</li> <li>Frame rates:                             <ul style="list-style-type: none"> <li>MPEG-4: up to 30 fps at 800x600</li> <li>up to 10 fps at 1600x1200</li> <li>MJPEG: up to 30 fps at 800x600</li> <li>up to 15 fps at 1600x1200</li> </ul> </li> </ul>	<b>Housing</b> <ul style="list-style-type: none"> <li>Weather-proof IP67-rated housing</li> </ul>
<b>Image Settings</b> <ul style="list-style-type: none"> <li>Adjustable image size, quality, and bit rate</li> <li>Time stamp and text caption overlay</li> <li>Flip &amp; mirror</li> <li>Configurable brightness, contrast, saturation, sharpness, white balance and exposure</li> <li>AGC, AWB, AES</li> <li>Automatic, manual, or scheduled day/night mode</li> <li>BLC (Backlight Compensation)</li> <li>Supports privacy masks</li> </ul>	<b>Approvals</b> <ul style="list-style-type: none"> <li>CE, LVD, FCC, VCCI, C-Tick</li> </ul>
<b>Audio</b> <ul style="list-style-type: none"> <li>Compression:                             <ul style="list-style-type: none"> <li>GSM-AMR speech encoding, bit rate: 4.75 kbps to 12.2 kbps</li> <li>MPEG-4 AAC audio encoding, bit rate: 16 kbps to 128 kbps</li> </ul> </li> <li>Interface:                             <ul style="list-style-type: none"> <li>External microphone input</li> <li>Audio output</li> </ul> </li> <li>Supports two-way audio via SIP protocol</li> <li>Supports audio mute</li> </ul>	<b>Operating Environments</b> <ul style="list-style-type: none"> <li>Temperature: -20 ~ 50 °C (-4 ~ 122 °F )</li> <li>Humidity: 90% RH</li> </ul>
<b>Networking</b> <ul style="list-style-type: none"> <li>10/100 Mbps Ethernet, RJ-45</li> <li>Protocols: IPv4, IPv6, TCP/IP, HTTP, HTTPS, UPnP, RTSP/RTP/RTCP, IGMP, SMTP, FTP, DHCP, NTP, DNS, DDNS, PPPoE, CoS, QoS, SNMP and 802.1X</li> </ul>	<b>Viewing System Requirements</b> <ul style="list-style-type: none"> <li>OS: Microsoft Windows 2000/XP/Vista</li> <li>Browser: Mozilla Firefox, Internet Explorer 6.x or above</li> <li>Cell phone: 3GPP player</li> <li>Real Player: 10.5 or above</li> <li>Quick Time: 6.5 or above</li> </ul>
	<b>Installation, Management, and Maintenance</b> <ul style="list-style-type: none"> <li>Mounting bracket w/ cable concealment</li> <li>RS-485 interface for scanners, pan/tilts</li> <li>Installation Wizard 2</li> <li>32-CH ST7501 central management software</li> <li>Supports firmware upgrade</li> </ul>
	<b>Applications</b> <ul style="list-style-type: none"> <li>SDK available for application development and system integration</li> </ul>
	<b>Warranty</b> <ul style="list-style-type: none"> <li>24 months</li> </ul>

All specifications are subject to change without notice. Copyright © 2009 VIVOTEK INC. All rights reserved.



# Network Bullet Camera IP7361

2MP • Day & Night • Cable Management



VIVOTEK IP7361 is a high-end 2-megapixel network bullet camera for outdoor surveillance. With high resolution and a combination of outdoor-specific features such as concealed wiring to prevent tampering, the IP7361 is the camera of choice for applications such as parking lots, gas stations, and building entrances.

The IP7361 boasts high-definition 2-megapixel (1600 x 1200) resolution, allowing for the delivery of extremely detailed images and coverage 6 times larger than a VGA camera. To maximize the benefit of the 2-megapixel sensor, the IP7361 employs several innovative technologies for optimized bandwidth efficiency. The ePTZ function enables users to quickly move to a target area for close-up shots without moving the camera physically. Users can also receive only the portions of the images they are interested in via the cropping function. Furthermore, multiple video streams can be delivered simultaneously in different resolutions, frame rates, and image qualities for viewing on different platforms so as to meet different needs or bandwidth constraints. The IP7361 also offers activity adaptive streaming support that dynamically allocates bandwidth according to the video content and trigger state.

Aimed at outdoor surveillance, the IP7361 features auto-iris capability to protect the lens from damage induced by direct sunlight. To adapt to light changes throughout the day, the camera is furnished with a removable IR-cut filter and IR illuminators for superior image quality around the clock. The IP7361 also comes with an IP67-rated housing that offers protection against rain and dust to ensure functional operation in all types of weather conditions. For easy management and protection against tempering and vandalism, the IP7361 is also equipped with a mounting bracket that conceals all cables within the bracket.

With other advanced features such as tamper detection, 802.3af compliant PoE, SD/SDHC card on-board storage, and two-way audio via SIP protocol, the IP7361 is an all-in-one network camera for outdoor environments.



## Flawless Image Quality & Data Efficiency



The IP7361 is equipped with a 2-megapixel sensor, making it capable of providing highly detailed images by which users can easily and accurately identify minute objects such as vehicle license plates or facial features.

To take full advantage of the high resolution capabilities, the IP7361 is incorporated with innovative bandwidth-saving technologies. Cropping allows for the removal of unnecessary information and transmits only the image of a selected region. ePTZ can zoom in on a target area without changing the camera direction physically, then deliver only the image of that region via the Multiple Streams feature for optimal bandwidth allocation. Activity Adaptive Streaming allocates bandwidth usage dynamically with a configurable frame rate to optimize bandwidth consumption for different situations.

## Ultimate Outdoor Surveillance

### Clear Images 24/7

The IP7361 delivers day & night functionality with a built-in removable IR-cut filter. By day, the IR-cut filter screens out infrared light to reduce color distortion, and at night, the filter is removed to accept infrared light for higher lighting efficiency. Additionally, the built-in IR illuminators with 25-meter range provide increased light sensitivity at night, enabling the IP7361 to be used in total darkness.



### IP67-rated Housing

The IP7361's weather-proof IP67-rated housing provides protection from extreme weather conditions, dust, and moisture. It offers total protection against contamination and withstands water jet ingress, allowing for operation in demanding environments.



## Advanced Security and Camera Protection

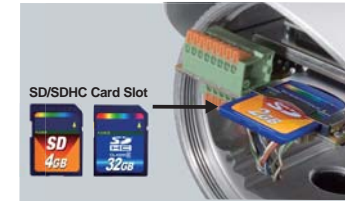
### Tamper Detection

This function can detect changes caused by camera tampering, such as blockage and spray-painting, and send out alerts so that the operator can address security issues immediately, making the IP7361 an invaluable solution for vandalism-prone areas.



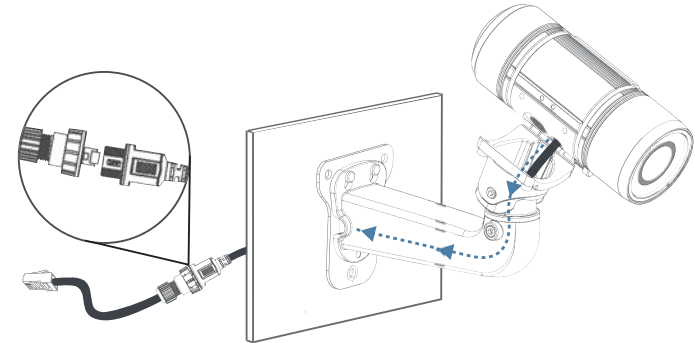
### Uninterrupted Recording

The IP7361 features a SD/SDHC card slot to provide short-term and portable video storage on removable memory cards, thereby providing a higher level of convenience and data protection. With this feature, because camera images are continuously recorded on the SD/SDHC card, the chance of data loss due to network disconnection is greatly reduced.



### Cable Management Bracket for Secure Monitoring & Cable Protection

The IP7361 comes with a custom mounting bracket within which cabling is routed. This protective bracket prevents the cables from malicious or natural damage, guaranteeing consistent and reliable surveillance performance. The bracket also allows for quick and simple installation, giving the camera a clean and professional appearance. To offer comprehensive protection, water-proof materials are used along with a water-proof connector; as such, even if not concealed within the bracket, users need not worry about damage caused by water or other liquids.



## Product Features

- 2-megapixel CMOS Sensor
- 3 ~ 9 mm Vari-focal, Auto-iris Lens
- Removable IR-cut Filter for Day & Night Function
- Built-in IR Illuminators, effective up to 25 Meters
- Real-time MPEG-4 and MJPEG Compression (Dual Codec)
- Multiple Streams Simultaneously
- ePTZ for Data Efficiency
- Weather-proof IP67-rated Housing
- Built-in 802.3af Compliant PoE
- Two-way Audio via SIP Protocol
- Built-in SD/SDHC Card Slot for On-board Storage
- Mounting Bracket with Cable Management for Protected Installation

