

Technical Specifications

System

- CPU: TI DM368 SoC
- Flash: 128MB
- RAM: 256MB
- Embedded OS: Linux 2.6

Lens

- Board lens, vari-focal, f = 3 ~ 9 mm, F1.2 (wide), F2.1 (tele), auto-iris
- Removable IR-cut filter for day & night function

Field of View

- 37.5° ~ 103.7° (horizontal)
- 21.6° ~ 71.2° (vertical)
- 42.6°~111.2° (diagonal)

Shutter Time

- 1/5 sec. to 1/32,000 sec

Image Sensor

- 1/2.7" CMOS sensor in 1920 x 1080 resolution

Minimum Illumination

- 0.08 Lux @ F1.2 (Color)
- 0.001 Lux @ F1.2 (B/W)

IR Illuminators

- Built-in IR illuminators, effective up to 20 meters
- IR LEDx12

Video

- Compression: H.264, MJPEG & MPEG-4
- Streaming:
 - Multiple simultaneous streams
 - H.264 streaming over UDP, TCP, HTTP or HTTPS
 - MPEG-4 streaming over UDP, TCP, HTTP or HTTPS
 - H.264/MPEG-4 multicast streaming
 - MJPEG streaming over HTTP or HTTPS
- Supports activity adaptive streaming for dynamic frame rate control
- Supports video cropping for bandwidth saving
- Supports ePTZ for data efficiency
- Supports 3GPP mobile surveillance
- Frame rates:
 - H.264:
 - Up to 30 fps at 1280x720
 - Up to 30 fps at 1920x1080
 - MPEG-4:
 - Up to 30 fps at 1280x720
 - Up to 27 fps at 1920x1080
 - MJPEG:
 - Up to 30 fps at 1280x720
 - Up to 30 fps at 1920x1080

Image Settings

- Adjustable image size, quality and bit rate
- Time stamp and text caption overlay
- Flip & mirror
- Configurable brightness, contrast, saturation, sharpness, white balance and exposure
- AGC, AWB, AES
- WDR enhanced
- Focus assist (Networking)
- Automatic, manual or scheduled day/night mode
- BLC (Backlight Compensation)
- Supports privacy masks

Audio

- Compression:
 - GSM-AMR speech encoding, bit rate: 4.75 kbps to 12.2 kbps
 - MPEG-4 AAC audio encoding, bit rate: 16 kbps to 128 kbps
 - G.711 audio encoding, bit rate: 64 kbps, µ-Law or A-Law mode selectable.
- Interface:
 - External microphone input
 - Audio output
- Supports two-way audio
- Supports audio mute

Networking

- 10/100 Mbps Ethernet, RJ-45
- Onvif support
- Protocols:
 - IPv4, IPv6, TCP/IP, HTTP, HTTPS, UPnP, RTSP/RTMP/RTCP, IGMP, SMTP, FTP, DHCP, NTP, DNS, DDNS, PPPoE, CoS, QoS, SNMP, and 802.1X

Alarm and Event Management

- Triple-window video motion detection
- Tamper detection
- One D/I and one D/O for external sensor and alarm
- Event notification using HTTP, SMTP or FTP
- Local recording of MP4 file

On-board Storage

- Micro SD/SDHC card slot
- Stores snapshots and video clips

Security

- Multi-level user access with password protection
- IP address filtering
- HTTPS encrypted data transmission
- 802.1X port-based authentication for network protection

Users

- Live viewing for up to 10 clients

Dimension

- Camera: Ø 70 mm x 186 mm
- Cable length: 520 mm
- Cable diameter: Ø 7.2 mm; Max width: Ø 14 mm

Weight

- Net: 990 g

LED Indicator

- System power and status indicator
- System activity and network link indicator

Power

- 12V DC
- 24V AC
- Power consumption: Max. 9.6 W
- 802.3af compliant Power-over-Ethernet (Class 3)

Housing

- Weather-proof IP67-rated housing

Approvals

- CE, LVD, FCC, VCCI, C-Tick, UL

Operating Environments

- Temperature: -20 °C ~ 50 °C (-4°F ~ 122 °F)
- Humidity: 90% RH

Viewing System Requirements

- OS: Microsoft Windows 7/Vista/XP/2000
- Browser: Mozilla Firefox, Internet Explorer 6.x or above
- Cell phone: 3GPP player
- Real Player: 10.5 or above
- Quick Time: 6.5 or above

Installation, Management, and Maintenance

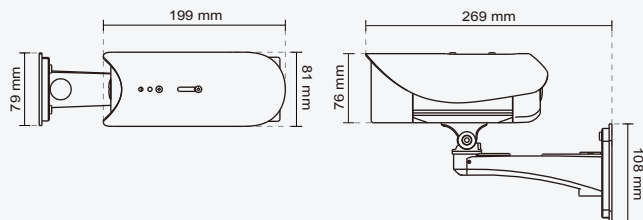
- Mounting bracket with cable concealment
- RS-485 interface for scanners, pan/tilts
- Installation Wizard 2
- 32-CH ST7501 recording software
- Supports firmware upgrade

Applications

- SDK available for application development and system integration

Warranty

- 36 months



SUPREME
A NEW DEFINITION OF HD



Network Bullet Camera IP8362

2-Megapixel • Full HD • WDR Enhanced



VIVOTEK IP8362 is a best-in-class 1080p outdoor bullet network camera designed for diverse outdoor applications. With full HD resolution in 16:9 aspect ratio and WDR enhancement, users can identify image details in extremely bright as well as dark environments.

The IP8362 supports high-performance H.264/MPEG-4/MJPEG compression technology and offers extra smooth video quality with up to 30 fps @ 1080p full HD. Furthermore, the IP8362 boasts a number of innovative technologies, including Video Cropping and Activity Adaptive Streaming, giving user the utmost in bandwidth and storage efficiency.

To adapt to constantly changing lighting conditions, the IP8362 comes with a removable IR-cut filter and built-in IR illuminators for both day and night applications. Its IP67-rated housing protects the camera body against rain and dust and ensures operation under extreme weather conditions. For complete installation and prevention of tampering and vandalism, the IP8362 is also packaged with a mounting bracket that conceals all cabling.

With other advanced features such as tamper detection, 802.3af compliant PoE, Micro SD/SDHC card slot for on-board storage, plus full HD video quality, the IP8362 is the best choice for the most demanding outdoor surveillance applications such as parking lots, entrances, communities, and much more.

All specifications are subject to change without notice. Copyright © 2011 VIVOTEK INC. All rights reserved. P/N:



VIVOTEK INC.

6F, No.192, Lien-Cheng Rd., Chung-Ho, New Taipei City, 235, Taiwan, R.O.C.
| T: +886-2-82455282 | F: +886-2-82455532 | E: sales@vivotek.com

VIVOTEK USA, INC.

2050 Ringwood Avenue, San Jose, CA 95131
| T: 408-773-8686 | F: 408-773-8298 | E: salesusa@vivotek.com

Ver 1.2

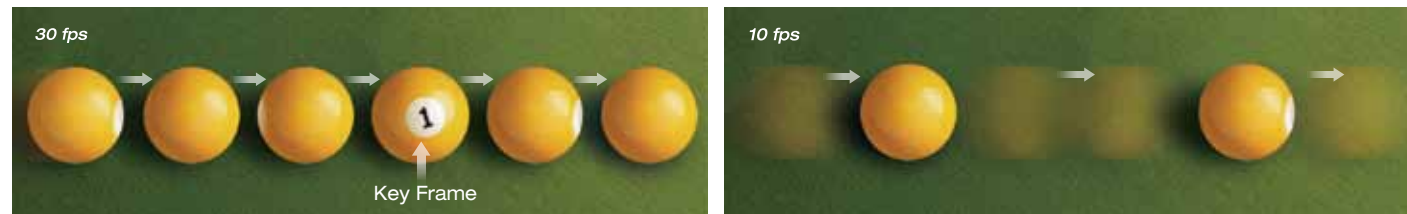


1080p Resolution at Full Frame Rate

The VIVOTEK IP8362 is able to transmit 2-Megapixel video at 30 fps with H.264 compression, while conventional megapixel cameras generally only achieve 10 to 15 fps due to hardware limitations. The ability to view and record footage at a full frame rate enables much more effective surveillance.

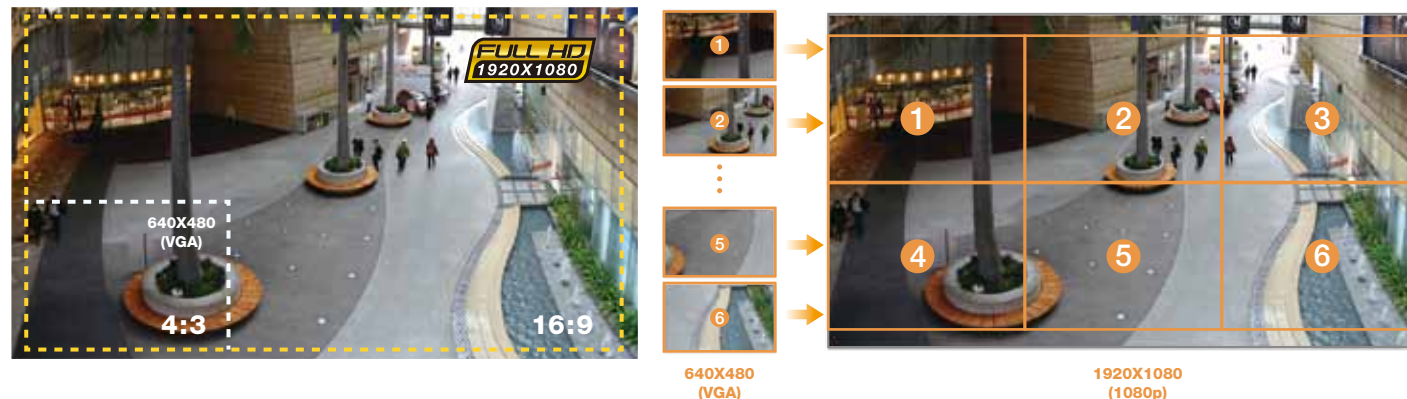


For example, if a person or object of interest passes quickly through the camera's field of view during an event, a 10 fps frame rate might mean only a single frame with the target is captured, while the IP8362 would capture three frames, providing a fuller record of the event and more reliable identification of the target.



Wide Coverage, Exceptional Details

Compatible with the HDTV (16:9) standard, the IP8362 provides surveillance coverage for an area up to six times larger than possible with a VGA camera, significantly reducing the number of cameras required. The IP8362 is especially well suited to monitor broad spaces such as building entrances, airport terminals, and parking lots. In addition, it is excellent for applications requiring accurate recognition for post-content analysis, such as the identification of people or license plates.



Adapted for High-contrast Lighting Conditions

When a camera is used in a high contrast, backlight, glare, or light reflective environment such as a building entrance, ATM, or window, a subject may appear dark and unrecognizable. WDR Enhanced technology compensates for the unbalanced lighting, restoring detail throughout the field of view, so as to give user unparalleled visibility to identify images.



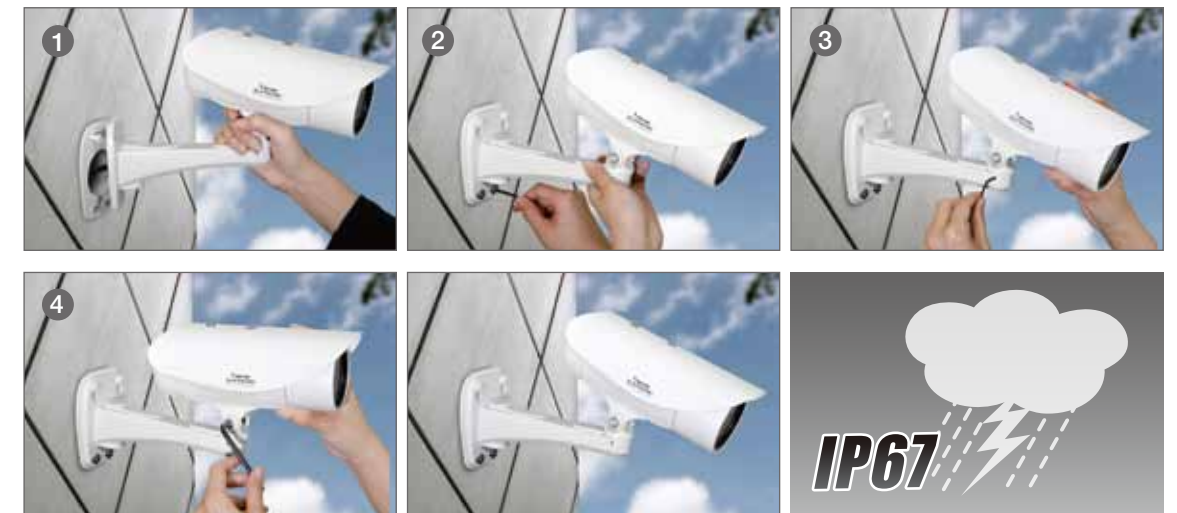
With WDR Enhanced



Without WDR Enhanced

Innovative Cable Management & Robust IP67-rated Housing

The IP8362 comes with a custom mounting bracket within which cabling is routed. This compact bracket prevents the cables from intentional or incidental damage, ensuring uninterrupted and reliable surveillance. The bracket also allows for a quick and simple four-step installation, while giving the camera a clean and professional appearance. The IP8362's weather-proof IP67-rated housing guards against extreme weather conditions, dust, and moisture. It offers total protection against contamination and resists water ingress, allowing for operation in demanding environments.



Applications



Product Features

IP8362 Network Bullet Camera

2-Megapixel • Full HD • WDR Enhanced

- 2-Megapixel CMOS Sensor
- Up to 30 fps @ 1080p Full HD
- 3 ~ 9 mm Vari-focal, Auto-iris Lens
- Removable IR-cut Filter for Day & Night Function
- Built-in IR Illuminators, Effective up to 20 Meters
- Real-time H.264, MPEG-4, and MJPEG Compression (Triple Codec)
- WDR Enhancement for Unparalleled Visibility in Extremely Bright or Dark Environments
- Weather-proof IP67-rated Housing
- Built-in 802.3af Compliant PoE
- Built-in Micro SD/SDHC Card Slot for On-board Storage
- Mounting Bracket with Cable Management for Protected Installation



ONVIF